

## LED Premium Street Light 40w c/w Photocell NEMA Dusk til Dawn Sensor

**£145.08**

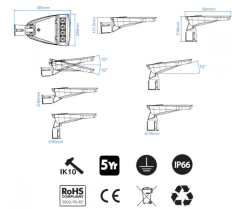
**5,600lm**



**40W**  
Replaces  
**70W SON**

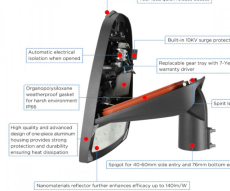


### LED Premium Street Light DIMENSIONS



### Performance-Optimized Design & Robust Construction

For MAXIMUM VALUE & MAXIMUM PROTECTION



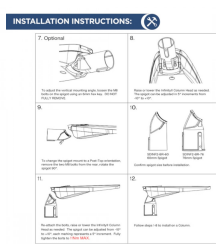
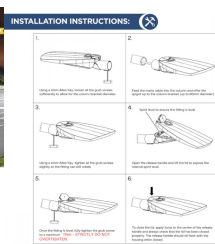
### PHOTOCELL ENABLED

FOR UP TO 80% SAVINGS ON ELECTRICITY



### DURABLE, ROBUST AND DEPENDABLE

LONG-LASTING PERFORMANCE



### DARK SKY FRIENDLY



**3000K\***



### PRODUCT INFORMATION

LED Type	SMD3030 LEDs
Warranty	5 Year
Part L Compliant	Yes
Dimensions	617mm x 212mm x 118mm
Weight	3.85kg
Windage	0.08m <sup>2</sup>
Socket Type	Optional 3 pin NEMA Socket
Equivalent to	70 SON

### TECHNICAL SPECIFICATIONS

Power Consumption	40W
Input Voltage	100-280V AC
Power Factor	>0.96
Operating Temperature	-20°C to 50°C
L70 Rated Lifetime	+100,000hrs
Ingress Protection	IP66

## PRODUCT INFORMATION

## TECHNICAL SPECIFICATIONS

### LUMEN PERFORMANCE

Luminous Efficiency	140lm/W
Beam Angle	150° x 80°
CRI (Colour Rendering Index)	>80Ra
Lumen Output	5,600lm

### AVAILABLE OPTIONS

Colour Temperature	3000K (Dark Sky Friendly- 0% ULOR) 4000K
3-Hour Emergency Version	No
Built-in Microwave Occupancy Detector	No
1-10V Dimmable	Available on Request
DALI Dimmable	Available on Request

**\*\*Fitting Comes inclusive with integral 3-Pin NEMA Socket and Lucy Zodion 70lux Photocell\*\***

Luminaire designed for column/post mounting at heights of 4 - 16m, with a range of sizes across 30W - 240W (4,200-33,000lm), IP66 design for exterior environments, with a low profile, sleek silver anodised aluminum body for harsh weather environments, Premium Street light is for urban applications such as car-parks, pathways and pedestrian areas. PMMA optic lens ensures a high degree of uniformity across a range of spaces and reduced light spillage, thus further enhancing this 140lm/W luminaire to give optimum lux levels through out. Furthermore the Premium Street light is compatible with standard mains photocells. Additional benefits include 100,000 hours maintenance free performance, with no-tools/quick release access to the internal control gear for installation. Unit available with either 60mm or 76mm entry bracket for both bottom & side-entry hence universally compatible. Angle of illumination can be adjusted around 10° for increased spread.

[DOWNLOAD PRODUCT INSTALLATION MANUAL / GUIDE](#)

[DOWNLOAD UKAS LABORATORY TEST DATA & COMPLIANCE CERTIFICATES](#)

[DOWNLOAD UKAS LABORATORY TEST DATA & COMPLIANCE CERTIFICATES](#)

[DOWNLOAD UKAS LABORATORY TEST DATA & COMPLIANCE CERTIFICATES](#)



Unit 2,  
Delta Court,  
Doncaster,  
DN9 3GN  
text\_phone 03333 444 943  
sales@theledstore.co | <https://theledstore.co/>