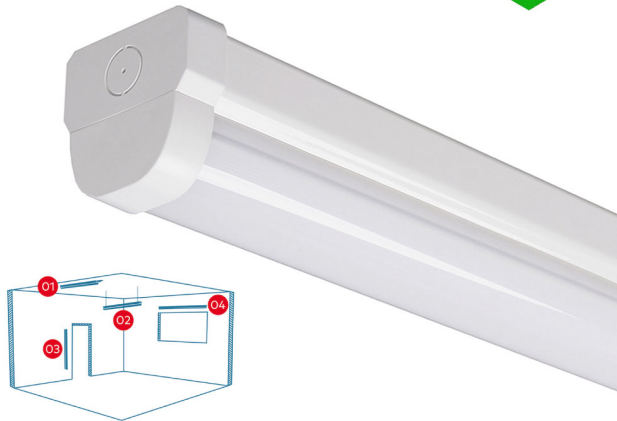


5FT LED BATTEN LIGHT 1500MM (1.5M) LED OFFICE LIGHT FOR CORRIDOR, BATHROOM, STAIRS, GARAGE, WORKSHOP - 60W / 7,200LM / 4000K

£38.40 £35.99

7,200lm

60W
5FT
1500mm



LED Complete Linear Batten Fitting
SF7/BS09MM 60W 7200LM



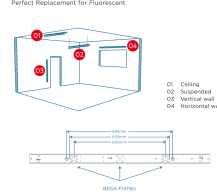
60W LED BATTEN FITTING



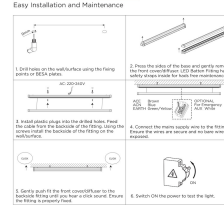
SUITABLE FOR MULTIPLE APPLICATIONS



VERSATILE MOUNTING OPTIONS
Perfect Replacement for Fluorescent



LED Linear Batten Fitting



Advances in luminous efficacy results in a delivered luminaire efficacy of 120lm/W. Designed as a direct replacement for conventional surface mount T8-Tubes across standard sizes of 1200mm, 1500mm & 1800mm, as well as suitable for new installations across a range of commercial applications. Conventional design for direct replacements of traditional technology - RAL White steel housing finished off with a frosted anti- glare PMMA optic/diffuser for subtle, uniform lumen output suitable for a range of commercial environments from office, corridor to retail with high CRI 80+. 2 piece body & cover design makes installation quick and easy, whether it be surface-mount (as standard) or suspension.

[DOWNLOAD PRODUCT INSTALLATION MANUAL / GUIDE](#)

PRODUCT INFORMATION

LED Type	SMD2835 LEDs
Warranty	3 Year
Part L Compliant	Yes
Dimensions	1493mm x 67mm x 68mm
Weight	1.7kg
Equivalent to	2 x 58W T8

TECHNICAL SPECIFICATIONS

Power Consumption	60W
Input Voltage	220-240V AC
Power Factor	>0.95
Operating Temperature	-20°C to 50°C
L70 Rated Lifetime	+45,000hrs
Ingress Protection	IP21

LUMEN PERFORMANCE

Luminous Efficiency	120lm/W
Beam Angle	120°
CRI (Colour Rendering Index)	>80
Lumen Output	7,200lm

PRODUCT INFORMATION

TECHNICAL SPECIFICATIONS

LUMEN PERFORMANCE

AVAILABLE OPTIONS

Colour Temperature	Natural White (4000-4500K)
1-10V Dimmable	Available Variant
DMX 512 Compatible	No