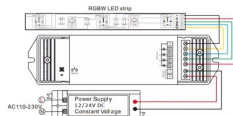
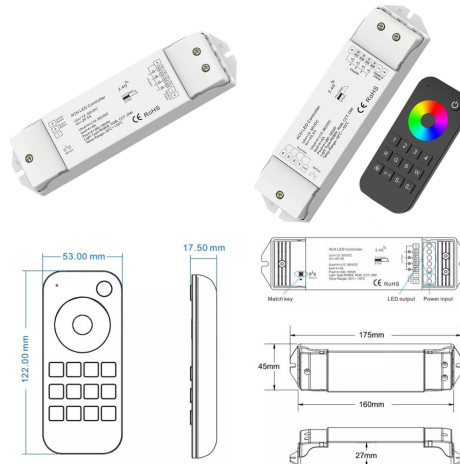


**12/24V RGBW LED RF Remote Controller 4 Zone RT9 - up to 30m range**

**£25.20**



**PRODUCT INFORMATION**

Warranty	1 Year Warranty
Part L Compliant	No
Dimensions	Remote - 122mm x 53mm x 17.5mm Receiver - 97mm x 33mm x 18mm
Weight	0.18kg

**TECHNICAL SPECIFICATIONS**

Input Voltage	12/24V DC
Operating Temperature	-20°C to 50°C
Ingress Protection	IP21
Output Voltage	Single zone only 12/24V DC - 4 Channel / 5A per Channel

**AVAILABLE OPTIONS**

3-Hour Emergency Version	No
1-10V Dimmable	No
DALI Dimmable	No

4 Zone 12/24V RGBW RF REMOTE Controller + optional 4 Channel x 5A receiver (required to control the strip, without the receiver the remote will have nothing to pair with).

Note - The unit is RF hence doesn't require a direct line of sight.

Control colour with colour-selection wheel, multi-mode for colour changing effects, 0 to 100% brightness. 4 Channel (5A per channel) - hence suitable for loads of 240W @ 12V / 480W @ 24V Max. For larger projects, please refer to our data repeater/power amplifier range along with this product. Requires 2 x AAA batteries (not-included)

[DOWNLOAD TYPICAL LED STRIP / LED TAPE WIRING DIAGRAM](#)



Unit 2,  
Delta Court,  
Doncaster,  
DN9 3GN

text\_phone 03333 444 943

sales@theledstore.co | <https://theledstore.co/>

[DOWNLOAD RF REMOTE CONTROL PRODUCT INSTALLATION MANUAL / GUIDE](#)

[DOWNLOAD LED RF RECEIVER PRODUCT INSTALLATION MANUAL / GUIDE](#)

[DOWNLOAD DATA REPEATER / POWER AMPLIFIER PRODUCT INSTALLATION MANUAL / GUIDE](#)

[Additional receivers can be purchased separately here](#) to create additional zones up to a maximum of 4