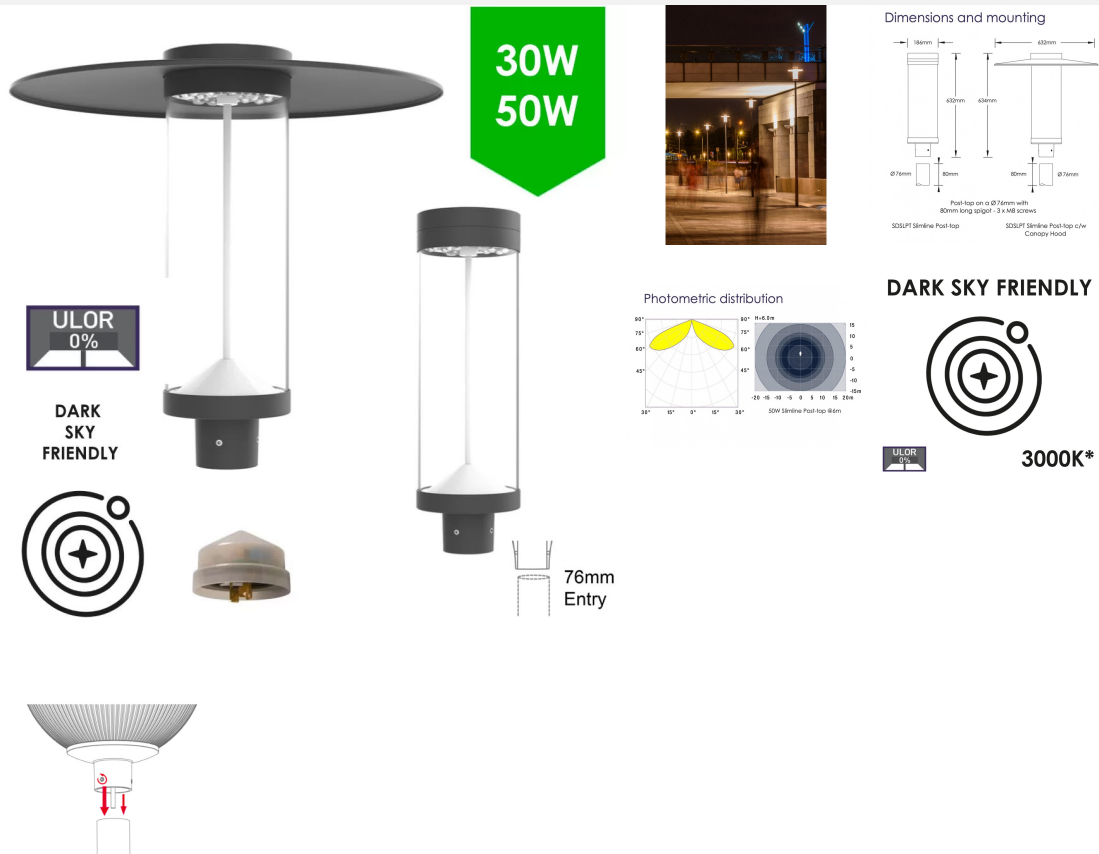


## LED Slimline Post-Top Street Light (30W /50W ) - 360 Degree Car Park / Street Light Lantern c/w Top Hat + Nema Socket & Photocell Dusk-til-Dawn Sensor

~~£440.40~~ **£226.80**



### PRODUCT INFORMATION

Body Colour	Slate Grey RAL 7015
LED Type	SMD3030 LEDs
Warranty	5 Year
Part L Compliant	Yes
Dimensions	Ø186mm x 632mm (Ø632mm x 634mm with canopy top hat hood)
Weight	4.2kg
Windage	0.14m <sup>2</sup>
Equivalent to	70 SON / MHL

### TECHNICAL SPECIFICATIONS

Power Consumption	30W / 50W
Input Voltage	100-280V AC
Power Factor	>0.95
Operating Temperature	-20°C to 65°C
L70 Rated Lifetime	+100,000hrs
Ingress Protection	IP65

### LUMEN PERFORMANCE

Luminous Efficiency	140lm/W
Beam Angle	150° x 150° (All-round-optic)
CRI (Colour Rendering Index)	>80Ra
Lumen Output	30W 4,200lm 50W 7,000lm

### AVAILABLE OPTIONS

**PRODUCT INFORMATION****TECHNICAL SPECIFICATIONS****LUMEN PERFORMANCE****AVAILABLE OPTIONS**

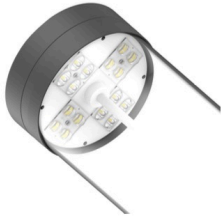
Colour Temperature	3000K (Dark Sky Friendly- 0% ULOR) 4000K
3-Hour Emergency Version	No
Built-in Microwave Occupancy Detector	No
1-10V Dimmable	Available on Request
DALI Dimmable	Available on Request

LED Slimline Post-Top Street Light (30W /50W ) - 360 Degree Car Park / Street Light Lantern c/w Top Hat + Nema Socket & Photocell Dusk-til-Dawn Sensor

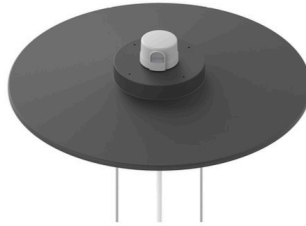
The Slimline series post-top is available as a smooth cylinder or incorporate a large canopy. With two timeless aesthetic designs, the Slimline blends into all kinds of urban environments for column/post mounting at heights of 3-6m, suited to general open areas such as pedestrian areas, car parks and low-to- medium traffic urban applications.

With a high tightness level and a very high degree of impact resistance, this luminaire is built to withstand harsh environmental conditions and vandalism to perform over time. Optional top hat canopy for a traditional look or slimline PMMA optic only for a minimalistic look, with a best-in-class degree of uniformity across a range of existing and new lighting pole installations. Furthermore, luminaire comes with optional 3/7 Pin NEMA socket for photocell/wireless plug-in or in 1-10V / DALI for PLC or dedicated dimming & controls.

The unit is complete with base mount suitable for 76mm post top entry hence universally compatible. Additional benefits include 140m/W efficacy, +100,000 hour maintenance free performance and minimal disturbance to nocturnal wildlife to the lack of UV/IR spectrum associated with LED photometric characteristics.



Optimised light distributions designed for large open areas



Standard 3/7 pin NEMA available or Zhaga sockets on request



Suitable for Ø76mm column entry

## Product information

Durable with rated life span L70>100,000 hours / No UV or IR emissions / Instant Illumination & flicker free / UKCA, CE & RoHS international standards / Environmentally friendly & part recyclable: no mercury or other hazardous materials used / Heavy duty die-cast aluminium housing & 5mm prismatic tempered glass / Available in DALI or 1-10V dimmable and PLC control systems / Complies with EN60598

Code	Nominal Size	Power Consumption	Lumen Output	Nett Weight	Windage
SDSLPT-A-030	Ø186mm x 632mm	30W	4,200lm	4.2kg	0.14m <sup>2</sup>
SDSLPT-A-050	Ø186mm x 632mm	50W	7,000lm	4.2kg	0.14m <sup>2</sup>

Beam Angle: 150°x 150°(All-round-optic) Luminous Efficacy: 140lm/W

Input Voltage: 100-277VAC

Color Rendering Index: 80Ra

LED Type: LM80 3030LEDs

Operating Temperature: -20°C to 50°C Power Factor: 0.95

Mounting Option: Post-top slip-over - Ø76mm Mounting Height: 3-6m

Colour Temperature: 3000K (dark sky friendly) / 4000K

(Others available on request)