

**1200W Asymmetric LED Flood Sports Area Light for Tennis Court, Football, Rugby Pitch, Horse Menage, Golf, Stadium, Arena**

**£1,546.80 £1,099.00**

**LED SPORTS  
MAST LIGHT  
300W - 1500W**



**LIGHTING PROJECT FLEXIBILITY**  
Perfect for hire & replacement

**LED Flood Sports Light DIMENSIONS**

UK CA CE RoHS IP65 IK09 50000h 50000lm 50000lm 50000lm

**REFERENCE PROJECTS**

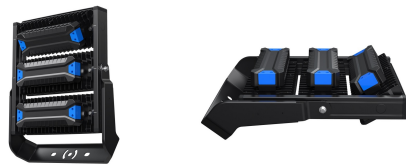
**EXCELLENT SPILL LIGHT CONTROL**  
Control Unwanted Light

**Optional Frost Visor**  
Optional Frost Visor with UV filter for protection and glare reduction. UV filter also helps to reduce glare and increase light output.

**Free Lighting Design Service**

Thanks to our many lights you receive? Choose your fixture to meet your specific lighting requirements. Our expert lighting designers are here to help.

Enquire about our FREE no obligation lighting design service - just send over drawing and your requirements - response provided in just 48 hours.



1200W Asymmetric LED Flood Sports Area Light for Tennis Court, Football, Rugby Pitch, Horse Menage, Golf, Stadium, Arena

LED Series Heavy Duty Flood Lighting - Stadium / High-Mast Lighting - 900W (135,000lm) - IP65 - Philips Lumileds® LEDs (770mm x 565mm x 325mm) - NW (4000K)

Other benefits include minimised attraction to nocturnal wildlife due to non ultraviolet light, high light output even in cold temperatures and a range of lumen packages 14,000-220,000lm to suit different environments. Ideal for projects such as sports pitches, tennis courts, horse arenas/menages and industrial applications. The unit features a choice of either an adjustable mounting bracket.

**PRODUCT INFORMATION**

LED Type	Philips Lumileds SMD LEDs
Warranty	5 Year
Part L Compliant	Yes
Dimensions	770mm x 565mm x 325mm
Weight	24kg
Windage	0.43m <sup>2</sup>
Equivalent to	1kw SON

**TECHNICAL SPECIFICATIONS**

Power Consumption	1200W
-------------------	-------

**PRODUCT INFORMATION**

**TECHNICAL SPECIFICATIONS**

Input Voltage	90-305V AC
Power Factor	>0.9
Operating Temperature	-25°C to 45°C
L70 Rated Lifetime	+100,000hours
Ingress Protection	IP66

**LUMEN PERFORMANCE**

Luminous Efficiency	150lm/W
Beam Angle	Symmetric 25° X 25° / 45° X 45°
CRI (Colour Rendering Index)	>80Ra
Lumen Output	180,000lm

**AVAILABLE OPTIONS**

Colour Temperature	Natural White 4000K
3-Hour Emergency Version	No
Built-in Microwave Occupancy Detector	No
1-10V Dimmable	Available Option
DALI Dimmable	Available Option