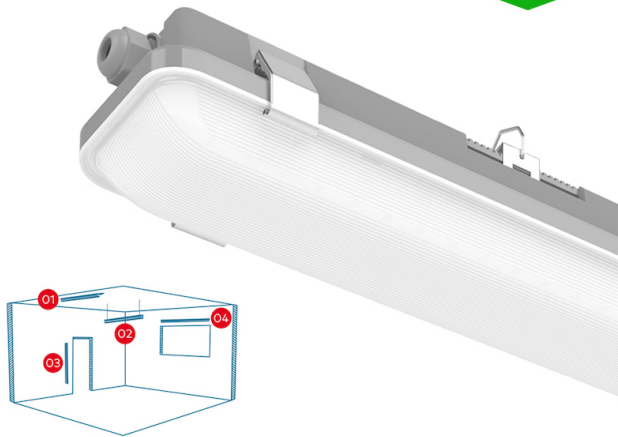


5ft LED Strip Light - 1500mm Non-corrosive IP65 Twin/150cm [1.5m] Vapour-proof / Weatherproof Batten

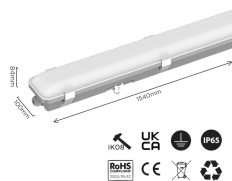
£31.81

7,700lm

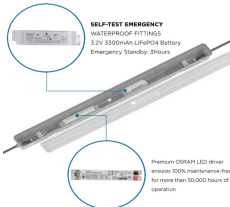
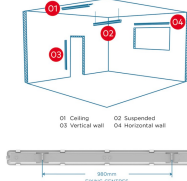
55W
5FT
1500mm



LED NON-CORROSIVE FITTING
5FT/1500mm 55W 7700LM

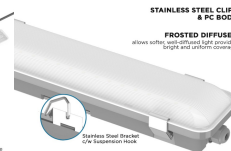


VERSATILE MOUNTING OPTIONS
Perfect Replacement for Fluorescent



DURABLE & RELIABLE CONSTRUCTION

STAINLESS STEEL CLIPS & PC BODY



IP65 RATING

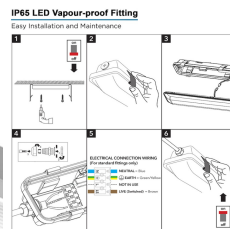
WATER & DUST PROOF

LED VAPOUR-PROOF FITTING

IP65 Water & Dust Proof



SUITABLE FOR MULTIPLE APPLICATIONS



PRODUCT INFORMATION

LED Type	SMD2835 LEDs
Warranty	5 Year
Part L Compliant	Yes
Dimensions	1540mm x 100mm x 84mm
Weight	3.2kg
Equivalent to	1500mm Twin 58W T8

TECHNICAL SPECIFICATIONS

Power Consumption	55W
Input Voltage	220-280V AC
Power Factor	>0.95
Operating Temperature	-20°C to 40°C
L70 Rated Lifetime	+50,000hrs
Ingress Protection	IP65
Emergency Battery Type	LiFePO4 3300Mah Lithium Ion c/w Self Test

LUMEN PERFORMANCE

Luminous Efficiency	120lm/W
Beam Angle	120°
CRI (Colour Rendering Index)	>75
Lumen Output	7700lm

AVAILABLE OPTIONS

Colour Temperature	Natural White 4000K
--------------------	---------------------

PRODUCT INFORMATION

TECHNICAL SPECIFICATIONS

LUMEN PERFORMANCE

AVAILABLE OPTIONS

3-Hour Emergency Version Yes

DMX 512 Compatible No

5ft / 1500mm [1.5m] Twin LED Strip Light - Osram® Driver

LiFePO4 Lithium Ion Emergency Battery - Environmentally friendly, fully recyclable

A revolutionary LED replacement to replace complete non-corrosive fluorescent tube fittings in 1500mm / 5ft twin variety - 55W / 7,700lm. With direct illumination technology, prove advantageous over both conventional fluorescents and LED tube counterparts in terms of industry leading efficacy: 120lm/W. Hence an L70 rated lifetime of 30,000+ hour and simple installation, this unit has proved to be the specifiers number one choice being deemed truly 'fit-and-forget'. Wide demand throughout commercial and industrial sectors, namely workshops, high-humidity areas and even outbuildings use being IP65 weather-proof. Toughened polycarbonate diffuser for uniform lumen output with robust PC base. Unit comes complete with stainless steel side clips, detachable hinged tray for ease of install, fixing brackets and M20 x 1.5 IP65 cable gland. Options of 4ft/1200mm, 5ft/1500mm & 6ft/1800mm. M3/NM3 emergency version includes internal built in 3-hour maintained emergency pack.