

**30W LED Top Hat Lantern - 360 Degree Car Park / Street Light Luminaire 30W
c/w 76mm Entry**

£253.80

3,750lm

30W
76mm
Column
Entry



**DARK
SKY
FRIENDLY**



**ULOR
0%**



DARK SKY FRIENDLY



**ULOR
0%**

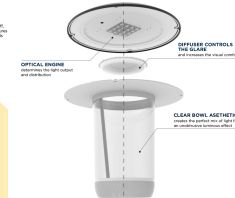
3000K*



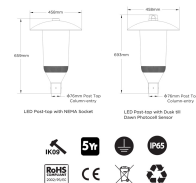
Reducing Lighting Pollution
Identify to Urban Spaces



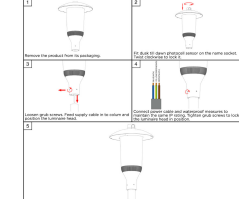
Elegance and Intelligence
A Gentle Glow Brings Safety



LED Post Top Lantern DIMENSIONS



30W LED Post Top Lantern
Easy Installation and Maintenance



PRODUCT INFORMATION

LED Type	SMD3030 LEDs
Warranty	5 Year
Part L Compliant	Yes
Dimensions	Ø458 x 659mm
Weight	6.7kg
Windage	0.15m ²
Equivalent to	70 SON / MHL

TECHNICAL SPECIFICATIONS

Power Consumption	30W
Input Voltage	100-280V AC
Power Factor	>0.95
Operating Temperature	-20°C to 65°C
L70 Rated Lifetime	+55,000hrs
Ingress Protection	IP65

LUMEN PERFORMANCE

Luminous Efficiency	125lm/W
Beam Angle	150° x 150° (All-round-optic)
CRI (Colour Rendering Index)	>80Ra
Lumen Output	3,750lm

AVAILABLE OPTIONS

Colour Temperature	3000K (Dark Sky Friendly- 0% ULOR) 4000K
--------------------	--

PRODUCT INFORMATION

TECHNICAL SPECIFICATIONS

LUMEN PERFORMANCE

AVAILABLE OPTIONS

3-Hour Emergency Version	No
Built-in Microwave Occupancy Detector	No
1-10V Dimmable	Available on Request
DALI Dimmable	Available on Request

The Top Hat series post-top is a modern designed LED luminaire for column/post mounting at heights of 3 - 7m, suited to general open areas such as pedestrian areas, car parks and low-to-medium traffic urban applications.

IP65 RAL Black die-cast housing finished with a polybonate diffuser, the 360 degree luminaire gives all round uniform illumination with minimal light spillage, capable for reaching 20-30lux from typical 5-6m installations. Furthermore, luminaire compatible with standard external mains photocells for complete dusk-till-dawn control.

The unit is complete with base mount suitable for 76mm post top column-entry hence universally compatible. Additional benefits include 95lm/W efficacy, +55,000 hour maintenance free performance and minimal disturbance to nocturnal wildlife to the lack of UV/IR spectrum associated with LED photo-metric characteristics.

[DOWNLOAD PRODUCT INSTALLATION MANUAL / GUIDE](#)