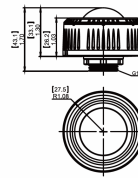


## LSTF2HB-PIR Motion Detection / Daylight Dimming PIR Sensor for LED Eco High Bay Light (2nd Gen)

**£32.40**



**Light-on-demand with PIR Sensor (Optional)**  
Multi-level Control Based on Motion/Daylight



\*PLEASE NOTE - This PIR sensor is only compatible with our [LSTF2HB Series LED Eco High Bay Light \(2nd Gen\)](#).

The LSTF2HB-PIR mounts to the lighting fixture and provides multi-level control based on motion and/or daylight contribution (increases energy savings by a further 30%\*).

It controls 0-10 VDC LED drivers or dimming ballasts, and is rated for wet and cold locations. All control parameters are adjustable via a wireless configuration tool capable of storing these settings. **The wireless configuration tool is available to purchase separately [here](#).**

[DOWNLOAD PRODUCT INSTRUCTION MANUAL](#)