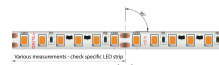
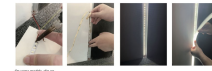


RGBW COB LED STRIP (5M ROLL) 12MM LED TAPE LIGHT - NO SPOTTING / SPOTLESS - 16W/M 24V DC COLOUR CHANGING IP65

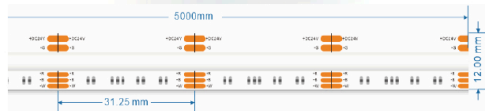
£77.88 £71.50

**24V DC
RGBW**

**5M Roll
16W/m
896leds/m**



Cut at cut points only



PRODUCT INFORMATION

LED Type	COB LEDs
Warranty	3 Year Warranty
Part L Compliant	No
Dimensions	5m x 12mm
Weight	0.12kg

TECHNICAL SPECIFICATIONS

Power Consumption	16W/m
Input Voltage	24V DC
Operating Temperature	-20°C to 40°C
Ingress Protection	IP65

LUMEN PERFORMANCE

Beam Angle	120°
LED Quantity	896LEDs/m
Lumen Output	RED - 80Lm per Metre GREEN - 340Lm per Metre BLUE - 60Lm per Metre WHITE - 240Lm per Metre

AVAILABLE OPTIONS

Colour Temperature	RGBW Colour Changing with separate white channel either: Warm White 3000K or Cool White 6500K
3-Hour Emergency Version	No
Built-in Microwave Occupancy Detector	No
1-10V Dimmable	No
DALI Dimmable	No
DMX 512 Compatible	Yes (via External DMX/RGBW Decoder)

****PLEASE NOTE LED STRIP IS EXTREMELY FRAGILE AND REQUIRES PROFESSIONAL INSTALLATION. PRODUCT SHOULD BE ORDERED/INSTALLED BY A QUALIFIED ELECTRIAN EXPERIENCED WITH LED STRIP/LOW VOLTAGE SYSTEMS.****

****THIS STRIP IS 12MM WIDE SO ONLY FITS IN PROFILE MODELS WITH A 12MM INSERT OR BIGGER.****

RGBW COB flexible LED strip light, not only allows colour changing flexibility across a vast range of colours, but also no spotting continuous smooth output. High power COB LEDs not only achieve a high luminosity, but also superb efficiency operating at 16 Watts per metre. Compatible with our standard RGBW controllers which is capable of producing more than 16 million colours. Brightness levels also adjustable (0% - 100%) with fade in / out and jump / flash effects to suit a range of environments. 896 LEDs per metre on a flexible PCB (printed circuit board), with 3M™ adhesive backing make installation of accent lighting across all projects simple. Supplied in 5 metre rolls, strips can be cut every 31.25mm sections, tailoring length to suit all applications. Suitable for indoor use. We also stock a wide range of power supplies (waterproof and non-waterproof) of various power outputs according to your requirements.

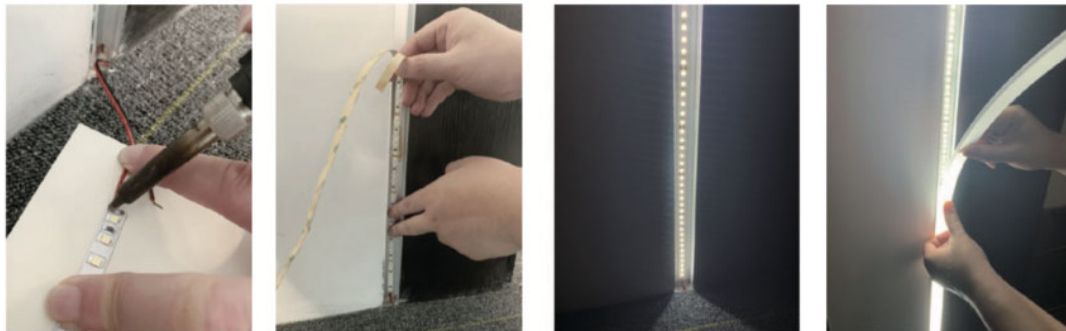
[DOWNLOAD LED STRIP LIGHT LED TAPE LIGHT INSTRUCTIONS - HOW TO INSTALL LED STRIP GUIDE / MANUAL](#)

[DOWNLOAD TYPICAL LED STRIP / LED TAPE WIRING DIAGRAM](#)

[DOWNLOAD RF REMOTE CONTROL PRODUCT INSTALLATION MANUAL / GUIDE](#)

[DOWNLOAD LED RF RECEIVER PRODUCT INSTALLATION MANUAL / GUIDE](#)

[DOWNLOAD DATA REPEATER / POWER AMPLIFIER PRODUCT INSTALLATION MANUAL / GUIDE](#)



On some models, clip on connectors are available*

DRIVER SELECTION GUIDE

Total Length of Strip (m)	Total Load (Watts)	Driver Size (Watts)*
1m	16W	30W
2m	32W	60W
3m	48W	60W
4m	64W	100W
5m	80W	100W
8m	128W	150W
10m	160W	400W
12m	192W	400W
15m	240W	400W

Does the LED Tape come with Aluminium Profile?

We sell each item individually, so this product page is for the led tape/led strip only. Check out relate products below for our range of [aluminium led profile](#) here.

Can I cut the aluminium LED tape?

Yes, it can be cut with a pair of scissors or electrical cutters at specified points.

Do you offer a 'cut-to-size' service?

Yes, see above options for adding on custom cuts, just enter the number of cuts, and the measurements of each cut separated by commas, if multiple cuts. Items come with 1m cable. Please note - once custom cut, the items are non refundable.

Do you have corner pieces/how do I go around corners?

We don't do corner pieces for our LED Strip. For going around 90° corners, you would need to cut and solder a cable connection join or use a [led strip connector](#). NOTE - LED strip connectors may not fit in all LED profiles please check prior to ordering.

Do you have joining pieces/ how do I join LED aluminium profile?

We don't do joining pieces for any of our led strip as generally it shouldn't be installed in single runs longer than 10m due to voltage drop to obtain a continuous appearance. If you do have to join a section or 2 off-cuts, you would need to cut and solder a cable connection join or use a [led strip connector](#). NOTE - LED strip connectors may not fit in all LED profiles please check prior to ordering.

What colours is the LED Strip available in?

As standard, we stock 3 whites:

- Warm White 2700-3000K
- Natural White - 4000K
- Cool white - 6500-7000K

And RGBW colour changing which with the correct LED controller from us can be changed through 16 million different variations of colour.

What lengths does LED strip come in?

We typically stock all of our LED Strip in 5m rolls as by the m/cut to size.

Is this waterproof? Can it be used outdoors or in bathrooms?

The LED strip itself is available in IP21 non-waterproof & IP65, waterproof / outdoor use. If outdoor or in wet locations, you would need to use suitable waterproof IP rated LED tape with your installation denoted IP65/waterproof.

How do I stop the LEDS spotting/dot effect?

When it comes to that spotty/dotty LED effect, people often think a diffuser will solve this outright. Unfortunately that is not true and depends using a quality LED strip with sufficient number of LEDS per m such as our continuous spotless / non spotting LED Strip such as this one [no spotting / no dotting spotless LED strip / LED tape light](#)

What size LED tape / LED strip fits in our LED aluminium profiles?

All of our range of LED strip/led tape fits in any of our profile, so rest assured when buying both LED tape and LED profile from us, your products are compatible.