

240W LED Flood Sports Area Light / Exterior Car Park Flood Lighting - Philips Luxeon Lumileds® LEDs Flicker Free

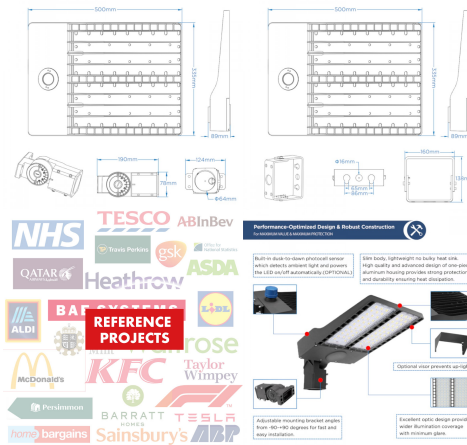
£239.40

240W
Replaces
400W MHL

33,600lm



LED AREA/SPORTS LIGHTING DIMENSIONS LED AREA/SPORTS LIGHTING DIMENSIONS



24/7 CUSTOMER SUPPORT

LED Area/Sports Light

Slim body, lightweight no bulky heat sink
Superior efficacy up to 140 lm/W
Wide range of lumen packages
Robust structure ensures durability
Adjustable bracket suitable for post or wall mounting

Performance-Optimized Design & Robust Construction

Optical clear polycarbonate light

Built-in dual to down photocell sensor which detects ambient light and powers the LED on/off automatically (DPT/ON/OFF)

Adjustable mounting bracket enables from 0° to 90° degrees for best use with easy installation

Excellent optic design provides wider distribution coverage with minimum glare

Slim body, lightweight no bulky heat sink
High quality and advanced design of one-piece aluminum housing provides strong protection and durability ensuring heat dissipation

Adjustable mounting bracket enables from 0° to 90° degrees for best use with easy installation

Excellent optic design provides wider distribution coverage with minimum glare

INSTALLATION INSTRUCTIONS:

1. Use Allen Key to take the adjustable mounting bracket apart.
2. If it is to be installed in the luminaire, insert the wire through the center hole (the wire is for the luminaire).
3. Mount the luminaire to the suitable angle and to tighten the lock. Connect power cable and waterproof measures to maintain the same IP rating.
4. Fit the support to luminaire bracket to the luminaire.
5. Fit the support to post (not less than 40mm diameter).

INSTALLATION INSTRUCTIONS:

1. Fix the bracket to the luminaire.
2. Position and fix the luminaire using appropriate fixings. Adjust luminaire to suitable angle. Connect power cable and waterproof measures to maintain the same IP rating.

Choosing The Right Lighting For Exterior Applications

- High Efficacy up to 140lm/W
- High Quality 3000hrs on Core Housing
- Excellent Anti-Corrosion Salt Water Demand Application
- Robust Structure Ensures Durability

Free Lighting Design Service

Unsure of how many lights you require?
Concerned about aspect, tilt, beam and lumens?
Don't worry our expert lighting designers are here to help.

Enquire about our **FREE** site visitation lighting design service.
Turned around in 48 hours (not 50 hours!)

PRODUCT INFORMATION

LED Type	Philips Lumileds LUXEON® 3030 LEDs
Warranty	5 Year
Part L Compliant	Yes
Dimensions	500mm x 335mm x 89mm
Weight	6.6kg
Windage	0.21m ²
Equivalent to	400W Metal Halide

PRODUCT INFORMATION

TECHNICAL SPECIFICATIONS

Power Consumption	240W
Input Voltage	90-305V AC
Power Factor	>0.95
Operating Temperature	-20°C to 50°C
L70 Rated Lifetime	+100,000 hours
Ingress Protection	IP65 / IK09

LUMEN PERFORMANCE

Luminous Efficiency	140lm/W
Beam Angle	60°
CRI (Colour Rendering Index)	>80Ra
Lumen Output	33,600lm

AVAILABLE OPTIONS

Colour Temperature	Natural White 4000-4500K
3-Hour Emergency Version	No
Built-in Microwave Occupancy Detector	No
1-10V Dimmable	Available Option
DALI Dimmable	On Request

240W (33,600lm) LED Flood Sports Area Light / Exterior Car Park Flood Lighting utilises an advanced designed one-piece die cast aluminium heat sink system. The light weight housing provides strong protection, durability and heat dissipation while keeping head loads to a minimum for post top mounting. In combination with superior efficiency driver the fitting delivers an efficacy of 140lm/W. The luminaire features an array of integrated Philips Luxeon Lumileds® LEDs for durability and an advanced PMMA photometric optic to ensure light uniformity and minimum glare.

Other benefits include minimised attraction to nocturnal wildlife due to non ultraviolet light, high light output even in cold temperatures and a range of lumen packages 14,000-42,000lm to suit different environments. Ideal for projects such as sports pitches, tennis courts, horse arenas/menages and industrial applications. The unit features a choice of either an adjustable post top bracket (60mm entry) for mounting to lighting columns or an adjustable flood light bracket for wall/building mounting.

Further options include a built-in photocell dusk til dawn sensor which detects ambient light automatically powering the light fitting on/off - Available in the drop down menu.

[DOWNLOAD PRODUCT INSTALLATION MANUAL / GUIDE](#)