

**150W LED Flood Sports Area Light / Exterior Car Park Flood Lighting - Philips
Luxeon Lumileds® LEDs Flicker Free**

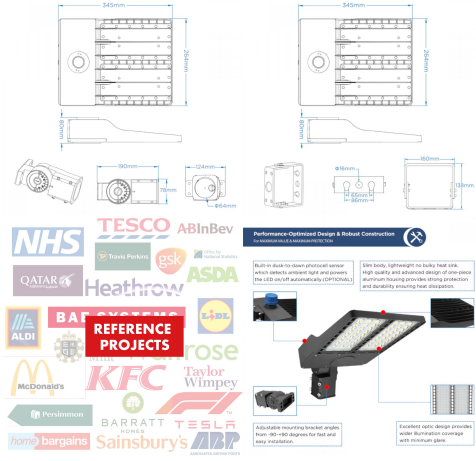
£149.50

150W
Replaces
250W MHL

21,000lm

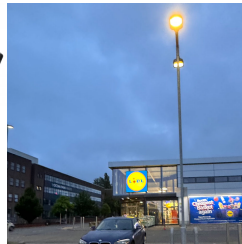


LED AREA/SPORTS LIGHTING DIMENSIONS LED AREA/SPORTS LIGHTING DIMENSIONS



Performance-Optimized Design & Robust Construction

Built to last to deliver premium service which reflects ambient light and prevents the LED from overheating (CPT/THALIA).
Slim body, lightweight no bulky heat sink. High quality and advanced design of one-piece aluminum housing provides strong protection and durability, ensuring heat dissipation.
Excellent optical design provides wider illumination coverage with minimum glare.Adjustable mounting bracket angles from 0°-180° degrees for post and wall installation.



24/7 CUSTOMER SUPPORT

LED AreaSports Light
Slim body, lightweight no bulky heat sink.
Superior efficacy up to 140 lm/W.
Wide range of lumens packages.
Robust structure ensures durability.
Adjustable bracket suitable for post or wall mounting.

INSTALLATION INSTRUCTIONS:

- Use Allen Key to take the adjustable mounting bracket apart.
- Fit the luminaire to the bracket. Insert the Allen Key into the center hole of the luminaire to adjust the mounting angle.
- Fit the luminaire to the bracket. Insert the Allen Key into the center hole of the luminaire to adjust the mounting angle.
- Fit the luminaire to the bracket. Insert the Allen Key into the center hole of the luminaire to adjust the mounting angle.
- Fit the luminaire to the bracket. Insert the Allen Key into the center hole of the luminaire to adjust the mounting angle.

Choosing The Right Lighting For Exterior Applications

- High Efficacy up to 140lm/W
- High Quality 200 Piece Die Cast Housing
- Excellent Craft, Single Side View Demand Application
- Robust Structure Ensures Durability

Free Lighting Design Service

Unsure of how many lights you require?
Clashed about optics, tilt levels and beam?
Don't worry, our expert lighting designers are here to help.
Enquire about our FREE or obligation lighting design service.
Turned in to you & shipped out in 5 days.

24/7 CUSTOMER SUPPORT



PRODUCT INFORMATION

LED Type	Philips Lumileds LUXEON® 3030 LEDs
Warranty	5 Year
Part L Compliant	Yes
Dimensions	345mm x 264mm x 80mm
Weight	4.6 kg
Windage	0.12m ²
Equivalent to	250W Metal Halide

PRODUCT INFORMATION**TECHNICAL SPECIFICATIONS**

Power Consumption	150W
Input Voltage	90-305V AC
Power Factor	>0.95
Operating Temperature	-20°C to 50°C
L70 Rated Lifetime	+100,000 hours
Ingress Protection	IP65 / IK09

LUMEN PERFORMANCE

Luminous Efficiency	140lm/W
Beam Angle	150° X 80°
CRI (Colour Rendering Index)	>80Ra
Lumen Output	21,000lm

AVAILABLE OPTIONS

Colour Temperature	Natural White 4000-4500K
3-Hour Emergency Version	No
Built-in Microwave Occupancy Detector	No
1-10V Dimmable	Available Option
DALI Dimmable	On Request

The 150W (21,000lm) LED Flood Sports Area Light utilises an advanced designed one-piece die cast aluminium heat sink system. The light weight housing provides strong protection, durability and heat dissipation while keeping head loads to a minimum for post top mounting. The luminaire features an array of integrated Philips Luxeon Lumileds® LEDs for durability and an advanced PMMA photometric optic to ensure light uniformity and minimum glare.

Other benefits include minimised attraction to nocturnal wildlife due to non ultraviolet light, high light output even in cold temperatures and a range of lumen packages 14,000-42,000lm to suit different environments. The luminaire has an IP65 design for exterior applications with a low profile, sleek aluminum body for harsh weather environments. The LED Flood Sports Area Light is suitable for urban applications such as car parks, pathways, pedestrian areas and street lighting. The PMMA optic lens ensures a high degree of uniformity across a range of spaces and reduced light spillage, thus further enhancing this 140lm/W luminaire to give optimum lux levels throughout.

The unit features a choice of either an adjustable post top bracket (60mm entry) for mounting to lighting columns or an adjustable flood light bracket for wall/building mounting.

Further options include a built-in photocell dusk til dawn sensor which detects ambient light automatically powering the light



fitting on/off - Available in the drop down menu.

Unit 2,
Delta Court,
Doncaster,
DN9 3GN
text_phone 03333 444 943
sales@theledstore.co | <https://theledstore.co/>

[DOWNLOAD PRODUCT INSTALLATION MANUAL / GUIDE](#)