

**100W LED Flood Sports Area Light / Exterior Car Park Flood Lighting - Philips  
Luxeon Lumileds® LEDs Flicker Free**

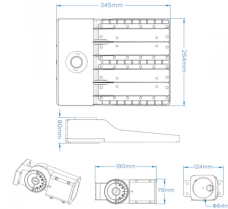
**£99.49**

**100W  
Replaces  
250W SON**

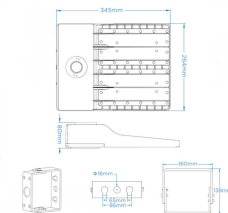
**14,000lm**



LED AREA/SPORTS LIGHTING DIMENSIONS



LED AREA/SPORTS LIGHTING DIMENSIONS

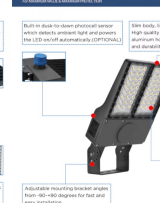


Performance-Optimized Design & Robust Construction

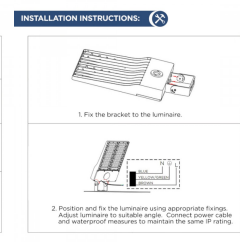
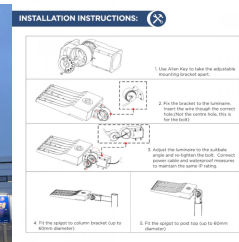
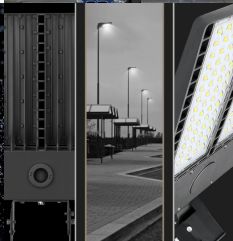
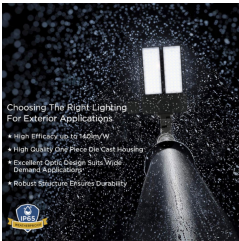


Each in-built to meet professional sector which reflects premium light and power, the LED cool aluminium (COP) design and durability ensuring heat dissipation.

Performance-Optimized Design & Robust Construction



Each in-built to meet professional sector which reflects premium light and power, the LED cool aluminium (COP) design and durability ensuring heat dissipation.



**PRODUCT INFORMATION**

LED Type	Philips Lumileds LUXEON® 3030 LEDs
Warranty	5 Year
Part L Compliant	Yes
Dimensions	345mm x 264mm x 80mm
Weight	4.6kg
Windage	0.12m <sup>2</sup>
Equivalent to	250W SON

**PRODUCT INFORMATION****TECHNICAL SPECIFICATIONS**

Power Consumption	100W
Input Voltage	90-305V AC
Power Factor	>0.95
Operating Temperature	-20°C to 50°C
L70 Rated Lifetime	+100,000 hours
Ingress Protection	IP65 / IK09

**LUMEN PERFORMANCE**

Luminous Efficiency	140lm/W
Beam Angle	150° X 80°
CRI (Colour Rendering Index)	>80Ra
Lumen Output	14,000lm

**AVAILABLE OPTIONS**

Colour Temperature	Natural White 4000-4500K
3-Hour Emergency Version	No
Built-in Microwave Occupancy Detector	No
1-10V Dimmable	Available Option
DALI Dimmable	On Request

The 100W (14,000lm) LED Flood Sports Area Light utilises an advanced designed one-piece die cast aluminium heat sink system. The light weight housing provides strong protection, durability and heat dissipation while keeping head loads to a minimum for post top mounting. The luminaire features an array of integrated Philips Luxeon Lumileds® LEDs for durability and an advanced PMMA photometric optic to ensure light uniformity and minimum glare.

Other benefits include minimised attraction to nocturnal wildlife due to non ultraviolet light, high light output even in cold temperatures and a range of lumen packages 14,000-42,000lm to suit different environments. The luminaire has an IP65 design for exterior applications with a low profile, sleek aluminum body for harsh weather environments. The LED Flood Sports Area Light is suitable for urban applications such as car parks, pathways, pedestrian areas and street lighting. The PMMA optic lens ensures a high degree of uniformity across a range of spaces and reduced light spillage, thus further enhancing this 140lm/W luminaire to give optimum lux levels throughout.

The unit features a choice of either an adjustable post top bracket (60mm entry) for mounting to lighting columns or an adjustable flood light bracket for wall/building mounting.

Further options include a built-in photocell dusk til dawn sensor which detects ambient light automatically powering the light



fitting on/off - Available in the drop down menu.

Unit 2,  
Delta Court,  
Doncaster,  
DN9 3GN  
text\_phone 03333 444 943  
sales@theledstore.co | <https://theledstore.co/>

[DOWNLOAD PRODUCT INSTALLATION MANUAL / GUIDE](#)