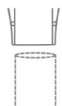


## LED Globe Post Top Lantern - IP65/IK08 Car Park / Street Light Luminaire 40W - 3-8m Column Street Lighting Fixture

**£232.08**

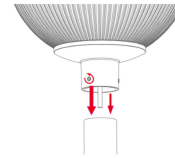
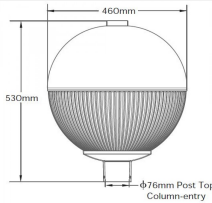
**4,400lm**

**40W**  
76mm  
Column  
Entry



76mm  
Entry

**ULOR**  
0%



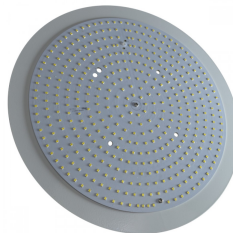
LED Globe Post-top with NEMA Socket



**DARK SKY FRIENDLY**



**3000K\***



### PRODUCT INFORMATION

LED Type	SMD3030 LEDs LM80
Warranty	5 Year
Part L Compliant	Yes
Dimensions	Ø460mm x 530mm
Weight	6.9kg
Windage	0.16m <sup>2</sup>
Equivalent to	70 SON / MHL

### TECHNICAL SPECIFICATIONS

Power Consumption	40W
Input Voltage	100-280V AC
Power Factor	>0.95
Operating Temperature	-20°C to 65°C
L70 Rated Lifetime	+55,000hrs
Ingress Protection	IP65

### LUMEN PERFORMANCE

Luminous Efficiency	120lm/W
Beam Angle	150° x 150° (All Round Optic)
CRI (Colour Rendering Index)	>80Ra
Lumen Output	4,800lm

### AVAILABLE OPTIONS

Colour Temperature	3000K (Dark Sky Friendly- 0% ULOR) 4000K
--------------------	--

## PRODUCT INFORMATION

## TECHNICAL SPECIFICATIONS

## LUMEN PERFORMANCE

### AVAILABLE OPTIONS

3-Hour Emergency Version	No
Built-in Microwave Occupancy Detector	No
1-10V Dimmable	Available on Request
DALI Dimmable	Available on Request

The LED Globe series post-top street light is a modern designed LED luminaire for column/post mounting at heights of 3 - 8m, suited to general open areas such as pedestrian areas, car parks and low-to-medium traffic urban applications.

The unit features an IP65/IK08 RAL Black die-cast housing finished with a prismatic diffuser giving all round uniform illumination with minimal light spillage. The luminaire is capable of reaching 20-30lux from typical 5-6m installations. Furthermore, the light provides easy access to LED and Driver via a removable head and is compatible with standard external mains photocells for complete dusk-till-dawn control.

The unit is complete with base mount suitable for 76mm post top column-entry hence universally compatible. Additional benefits include 110lm/W efficacy, +55,000 hour maintenance free performance and minimal disturbance to nocturnal wildlife to the lack of UV/IR spectrum associated with LED photo-metric characteristics.

[DOWNLOAD PRODUCT INSTALLATION MANUAL / GUIDE](#)