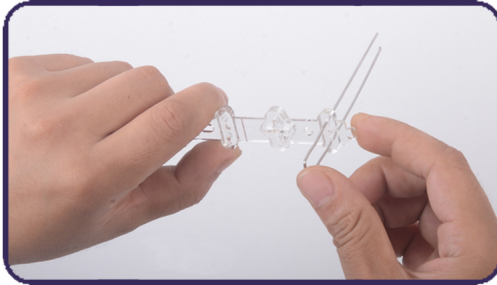
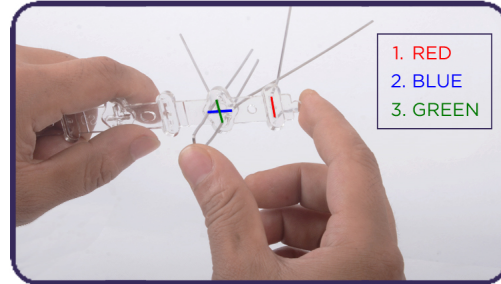


Steps to Install Pins of Bird Spikes

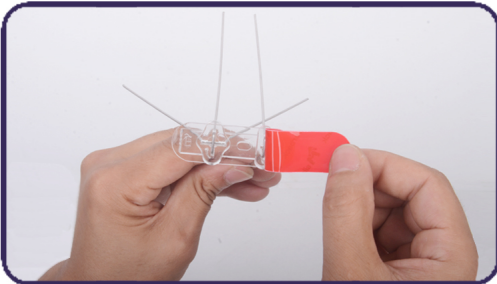
- * It takes about 1-3 minutes to install all pins of one strip.
- * It is better to wear gloves when installation to avoid any injury.
- * Keep it away from children.



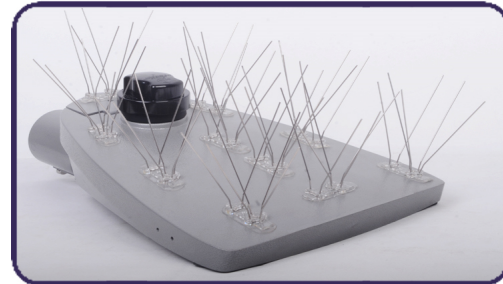
Step1 Take out the pins and let pins into holes from concave to convex side



Step2 Install pins in order and make sure concave surface is flush



Step3 Put double sided sticky pad onto the spike base



Step4 Choose appropriate position on lighting fixture. Secure the spike base on the surface and press it down firmly